

Pistol P30

- Variants -

Calibre .40 S&W



Spare Parts Catalogue

Pistol P30

- Variants -

Calibre .40 S&W



Table of contents

Using this spare parts catalogue	3
Purpose of this spare parts catalogue	3
Target audience for this spare parts catalogue	3
Information in the spare parts catalogue.....	3
Spare parts documentation.....	6
Exploded view	6
Magazine	18

Using this spare parts catalogue

Purpose of this spare parts catalogue

This spare parts catalogue can be used to order individual components and assembly groups for the weapon.

Target audience for this spare parts catalogue

This spare parts catalogue is intended for trained firearms technicians and administrative personnel.

Information in the spare parts catalogue

This spare parts catalogue contains all of the information that is necessary to order individual components and assembly groups for the weapon. The contents of this spare parts catalogue have the following meanings:

Information	Meaning
Illustration of individual components	The illustration of individual components is an exploded view showing all parts of the weapon that can be ordered.
Item (Item Number)	The Item Number shows the number of the part in the exploded view. If there is a "--" instead of the Item Number, then the indicated item is not shown in the exploded view, but can be ordered nevertheless.
Designation	The designation contains the name of the part. If more than one of a part is present, then the number of parts is shown in brackets after the designation, e.g. (2x).
Ident.-No. (Identification Number)	The Ident.-No. is Heckler & Koch's internal number for identifying products and individual components.
NSN (NATO Stock Number) – optional	The NATO Stock Number is an international code for the classification of products and individual components.
Drawing-No. (Drawing Number) – optional	The Drawing-No. contains the number of the engineering drawing or – for standardised parts – the designation of the standard where the part is defined.

Information	Meaning
Quantity per 100 weapons – optional	This number indicates the recommended quantity to keep in stock per 100 weapons. The quantity includes both wearing parts and parts which may become lost. This information represents theoretical values based on experience, and may vary in practice.
Quantity per maintenance unit – optional	This number indicates the recommended quantity to keep in stock per maintenance unit. The quantity includes both wearing parts and parts which may become lost. This information represents theoretical values based on experience, and may vary in practice.
Comments	This column may contain additional information.



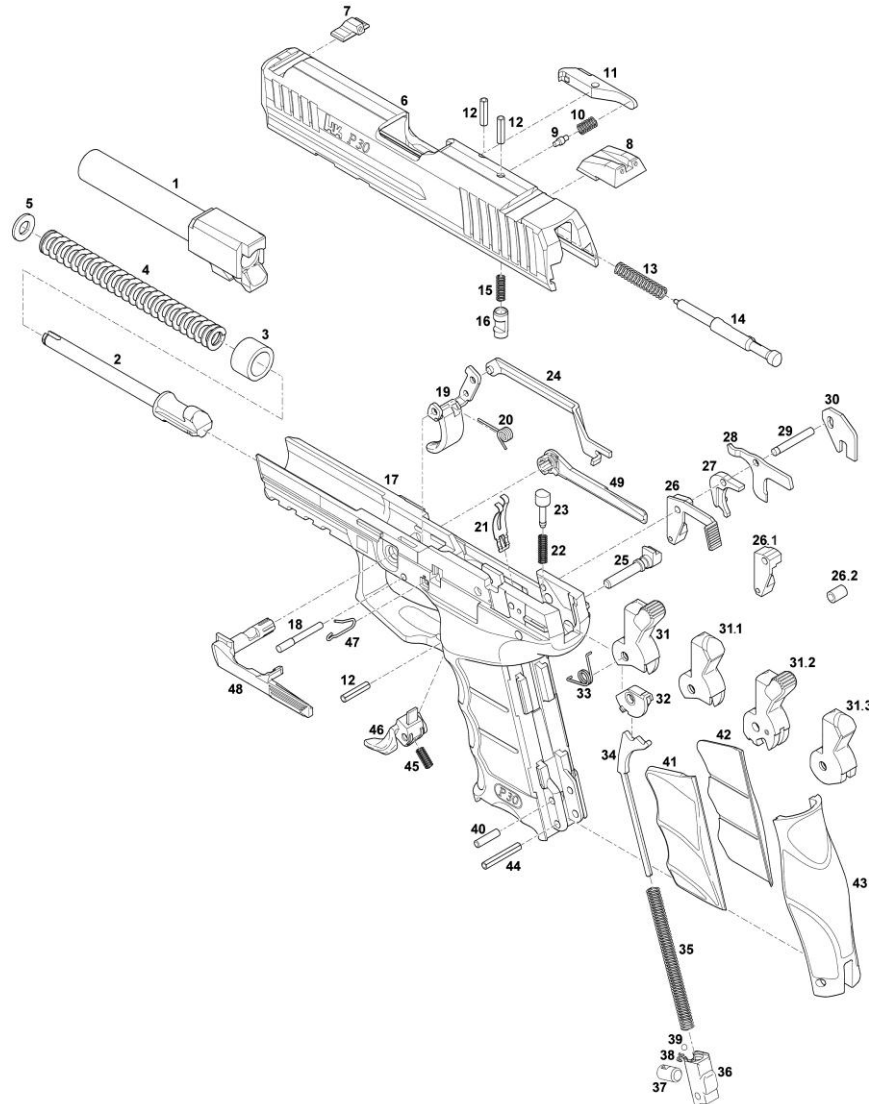
Parts and assembly groups can be ordered from Heckler & Koch by indicating the weapon, Designation and Ident.-No.

Pistol
P30
Calibre
.40 S&W

Exploded view



Spare Parts Catalogue
Heckler & Koch GmbH



Pistol P30 Calibre .40 S&W	<h2>Exploded view</h2>	 Spare Parts Catalogue Heckler & Koch GmbH
---	------------------------	---

Item	Designation	Ident.-No.	Drawing-No.	Quantity per 100 weapons	Quantity per service unit (10 Weapons)	Comments
--	Pistol P30 V1 .40 S&W	223 241	93500/31-100			
1	Barrel	229 751	93500-100.01			
--	Recoil spring guide rod, compl.	229 844	93500-150			
2	Recoil spring guide rod	234 310	93444-150.01			
3	Stop sleeve	215 932	93117-150.07			
4	Recoil spring	215 830	93117-150.03			
5	Recoil spring stop disc	215 831	93117-150.05			
--	Slide, compl.	229 843	93500-130			
6	Slide	229 773	93500-130.01			
7	Front sight, height 5,9 mm	227 711	93444-133			
7.1	Front sight, height 6,1 mm	234 327	93444-133			
7.2	Front sight, height 6,3 mm	234 328	93444-133			
7.3	Front sight, height 6,5 mm	234 329	93444-133			
7.4	Front sight, height 6,7 mm	234 386	93444-133			
7.5	Front sight, height 6,9 mm	234 387	93444-133			
8	Rear sight	234 323	93444-131			
9	Extractor bolt	209 294	93201-130.04			
10	Extractor spring	218 315	93203-130.03			
11	Extractor	218 314	93203-130.02			
12	Clamping sleeve (2x)	988 891	ISO 8750-3x14 ST			

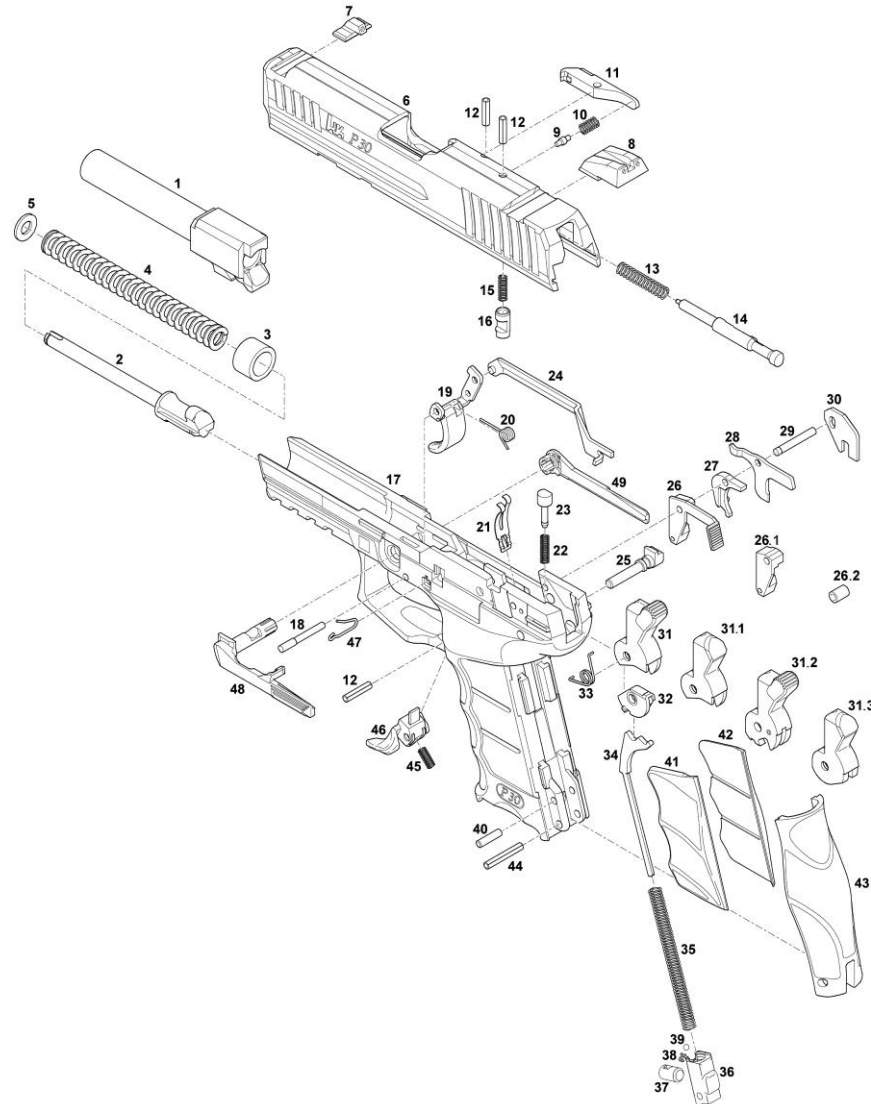
Pistol
P30

Calibre
.40 S&W

Exploded view



Spare Parts Catalogue
Heckler & Koch GmbH



Pistol
P30

Calibre
.40 S&W

Exploded view



Item	Designation	Ident.-No.	Drawing-No.	Quantity per 100 weapons	Quantity per service unit (10 Weapons)	Comments
13	Firing pin spring	215 822	93117-130.06			
14	Firing pin	234 654	93444-130.05			
15	Compression spring for drop safety catch	209 962	93201/02-130.09			
16	Drop safety catch	209 313	93201-130.08			
--	Frame, compl.	223 242	93444/31-110			
17	Frame	234 294	93444/12-111			
18	Axle for trigger	214 154	93083-110.02			
19	Trigger	234 297	93444-118			
20	Elbow spring for trigger	234 389	93444-110.04			
21	Leaf spring for catches	214 167	93083-110.11			
22	Trigger bar detent spring	209 270	93201-110.08			
23	Trigger bar detent	209 269	93201-110.07			
24	Trigger bar	207 331	93259-110.09			
25	Axle for hammer	209 272	93201-110.18			
26	Sear release catch, compl.	209 320	93201/02-115			
27	Hammer catch	209 273	93201-110.19			
28	Control lever	209 274	93201-110.20			
29	Cylindrical pin	234 758	93444-110.16			
30	Disconnecter	209 271	93201-110.10			
31.1	Hammer	209 321	93201/02-116			

Pistol
P30

Calibre
.40 S&W

Exploded view



Spare Parts Catalogue
Heckler & Koch GmbH

Item	Designation	Ident.-No.	Drawing-No.	Quantity per 100 weapons	Quantity per service unit (10 Weapons)	
32	Cocking piece	209 265	93201-110.01			
33	Elbow spring for hammer	209 275	93201-110.22			
34	Hammer spring rod	209 312	93201-110.25			
35	Hammer spring	214 695	93089-110.26			
--	Gunlock, compl.	234 664	93470-120			
36	Gunlock for hammer spring	234 665	93470-120.01			
37	Safety	207 191	93259-120.01			
38	Pressure spring for ball	985 934	DF 1312			
39	Ball	929 134	DIN 5401-2,5mm III			
40	Cylindrical pin	970 074	ISO 2338 3x12			
41	Grip shell, left (M)	234 303	93444-110.41			
42	Grip shell, right (M)	234 304	93444-110.42			
43	Back strap (M)	234 302	93444-110.40			
44	Clamping sleeve	978 170	ISO 8750 3x18			
45	Pressure spring for magazine catch	215 929	93117-110.23			
46	Magazine catch	234 296	93444-114			
47	Form spring for slide release	214 171	93083-110.24			
48	Slide release, left	202 805	93444-110.05			
49	Slide release, right	202 806	93444-110.06			
--	Socket key	227 539	93470-000.01			

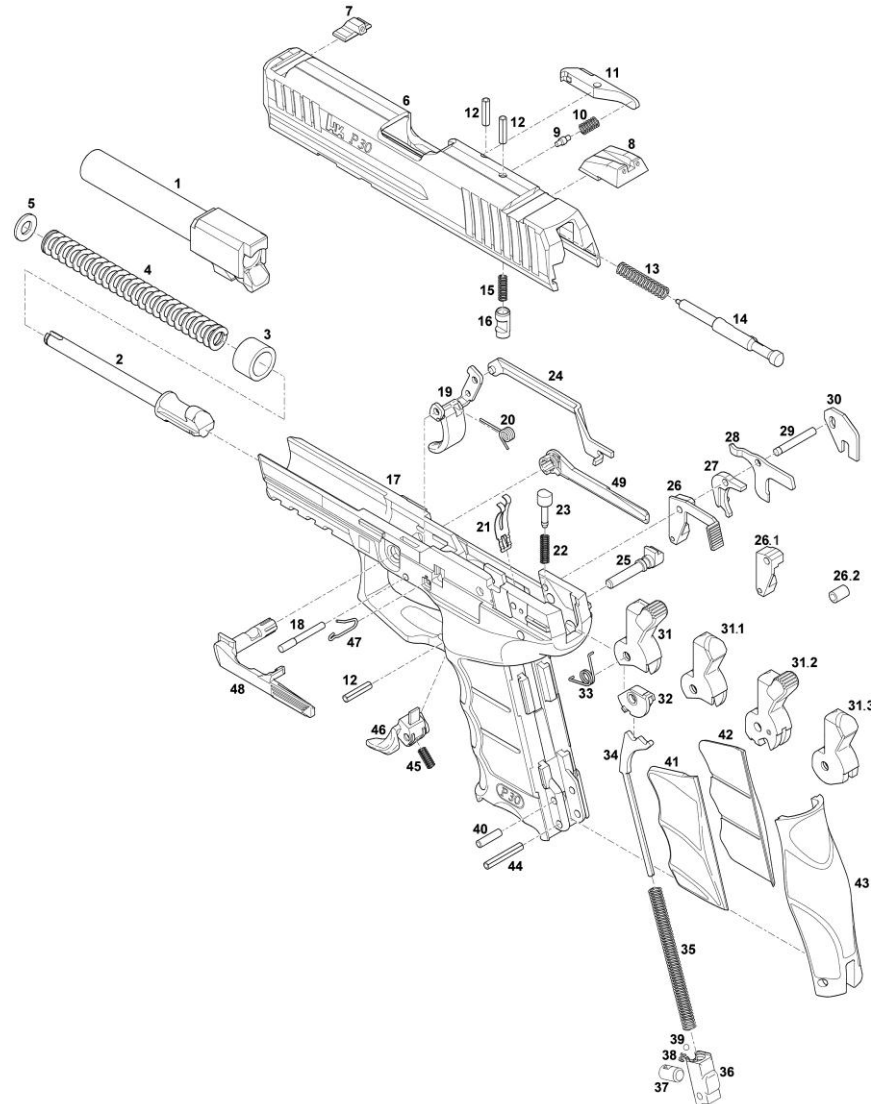
Pistol
P30

Calibre
.40 S&W

Exploded view



Spare Parts Catalogue
Heckler & Koch GmbH



Pistol P30 Calibre .40 S&W	<h2>Exploded view</h2>	 Spare Parts Catalogue Heckler & Koch GmbH
---	------------------------	---

Item	Designation	Ident.-No.	Drawing-No.	Quantity per 100 weapons	Quantity per service unit (10 Weapons)	Comments
--	Pistol P30 V2 .40 S&W, compl.	229 841	93500/32			
	Pistol P30 V2 .40 S&W	229 842	93500/32-100			
	Back strap (S)	234 299	93444-110.30			
	Grip shell, left (S)	234 300	93444-110.31			
	Grip shell, right (S)	234 301	93444-110.32			
	Back strap (L)	234 305	93444-110.50			
	Grip shell, left (L)	234 306	93444-110.51			
	Grip shell, right (L)	234 307	93444-110.52			
	Transport case	978 273	--			
--	Frame, compl.	229 824	93444/32-110			
20	Elbow spring for trigger	234 405	93444/02-110.04			

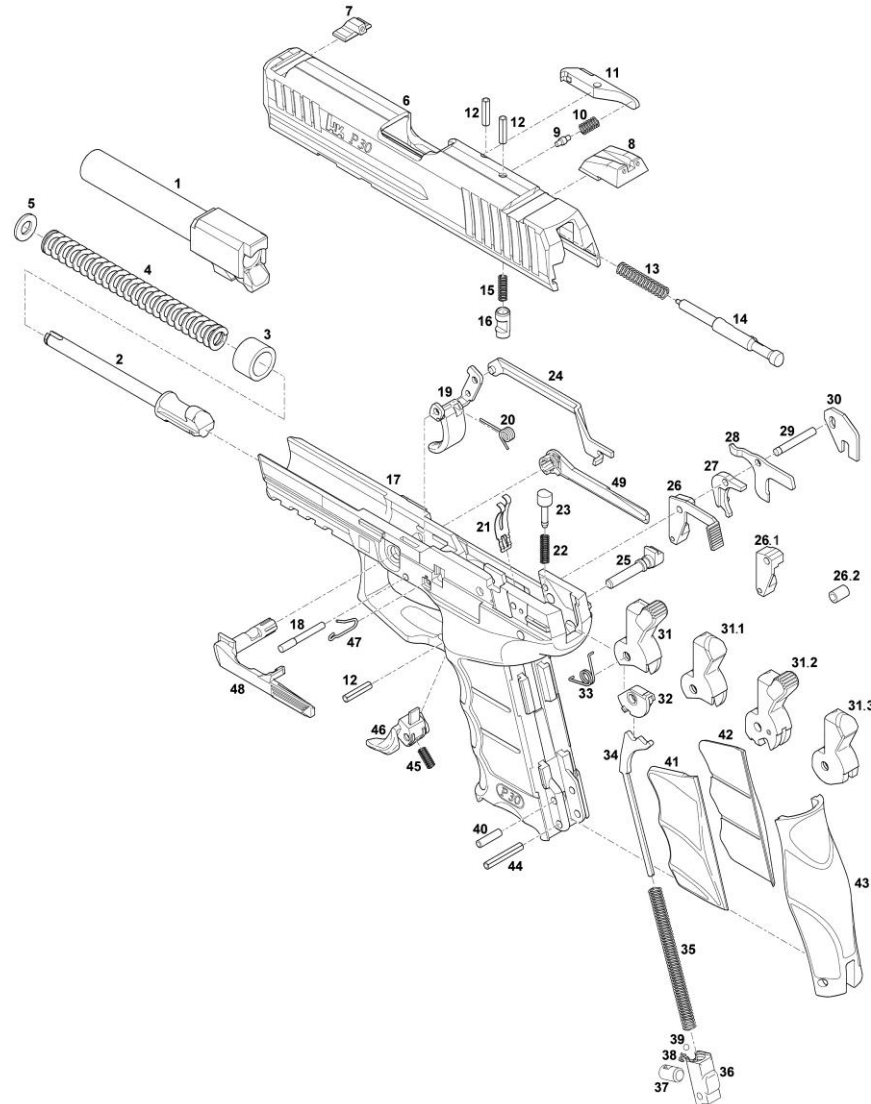
Pistol
P30

Calibre
.40 S&W

Exploded view



Spare Parts Catalogue
Heckler & Koch GmbH



Pistol P30 Calibre .40 S&W	<h2>Exploded view</h2>	 Spare Parts Catalogue Heckler & Koch GmbH
---	------------------------	---

Item	Designation	Ident.-No.	Drawing-No.	Quantity per 100 weapons	Quantity per service unit (10 Weapons)		Comments
--	Pistol P30 V3 .40 S&W	229 935	93500/33-100				
--	Frame, compl.	227 707	93444/33-110				
17	Frame	234 388	93444/10-111				
20	Elbow spring for trigger	234 389	93444-110.04				
26	Release catch	209 261	93201-115				
28	Control lever	234 487	93201/03-110.20				
31.2	Hammer, compl.	209 327	93201/03-116				
35	Hammer spring	214 300	93083-110.26				

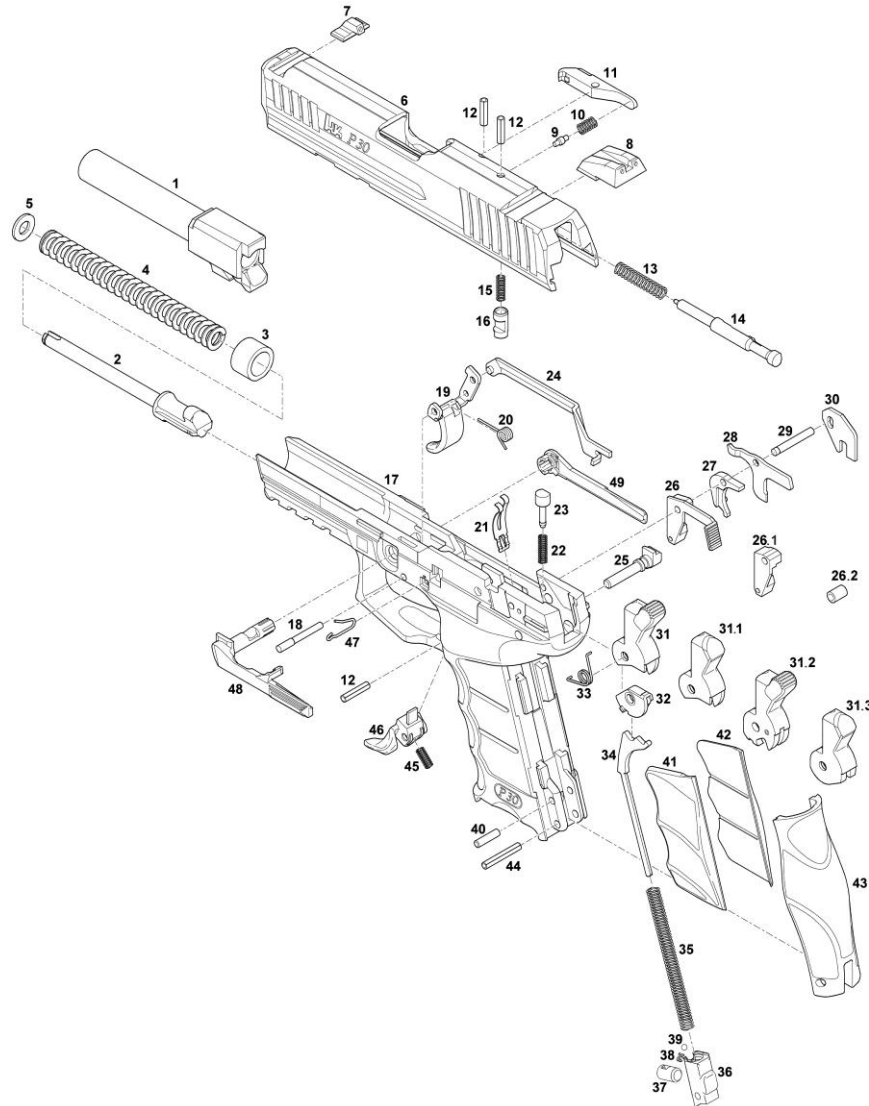
Pistol
P30

Calibre
.40 S&W

Exploded view



Spare Parts Catalogue
Heckler & Koch GmbH



Pistol P30 Calibre .40 S&W	<h2>Exploded view</h2>	 Spare Parts Catalogue Heckler & Koch GmbH
---	------------------------	---

Item	Designation	Ident.-No.	Drawing-No.	Quantity per 100 weapons	Quantity per service unit (10 Weapons)		Comments
--	Pistol P30 V6 .40 S&W	229 917	93500/16-100				
--	Frame, compl.	234 321	93444/16-110				
13	Pressure spring for firing pin	215 822	93117-130.06				
20	Elbow spring for trigger	234 322	93444/05-110.04				
21	Leaf spring for catches	215 691	93107-110.11				
24	Trigger bar	202 762	93259/05-110.09				
26.2	Bushing	207 038	93201/05-110.17				
31.3	Hammer, compl.	207 036	93201/05-116				
35	Hammer spring	227 522	93444/06-110.26				
36	Insert for hammer spring	234 295	93444-110.03				

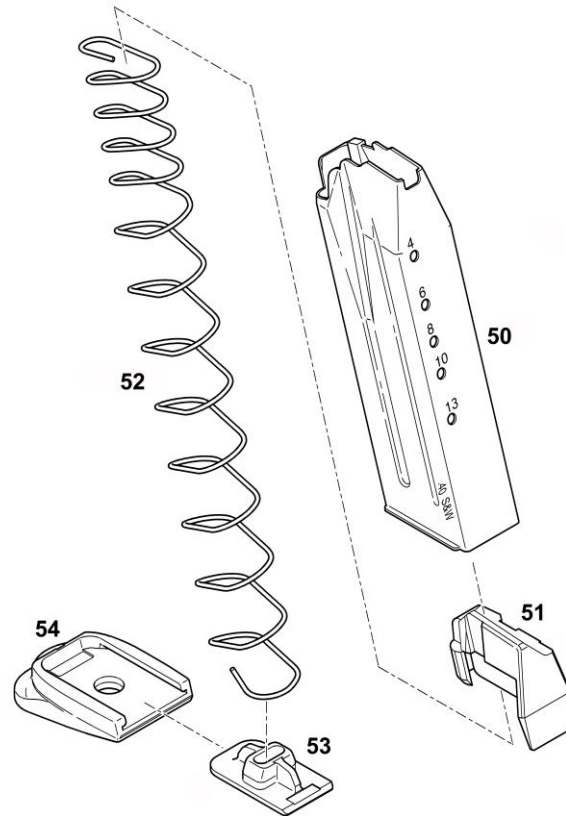
Pistol
P30

Calibre
.40 S&W

Magazine



Spare Parts Catalogue
Heckler & Koch GmbH



Pistol P30 Calibre .40 S&W	<h2>Magazine</h2>	 Spare Parts Catalogue Heckler & Koch GmbH
---	-------------------	---

Item	Designation	Ident.-No.	Drawing-No.	Quantity per 100 weapons	Quantity per service unit (10 Weapons)	Comments
--	Magazine P30 .40 S&W/13 cartridges (50 - 54)	229 845	93500-300			
50	Magazine housing	229 774	93444-301			
51	Follower	215 836	93117-400.05			
52	Magazine spring	215 118	93148-300.02			
53	Magazine locking plate	215 844	93118-300.04			
54	Magazine floor plate	234 298	93444-301			



No Compromise

Quality . Innovation . Service . Safety



Heckler & Koch GmbH
Heckler & Koch-Str. 1
78727 Oberndorf/N.
Germany

Telephone: +49 (0) 74 23 / 79-0
Fax: +49 (0) 74 23 / 79-23 50
E-mail: TD@heckler-koch-de.com
Internet: www.heckler-koch.com