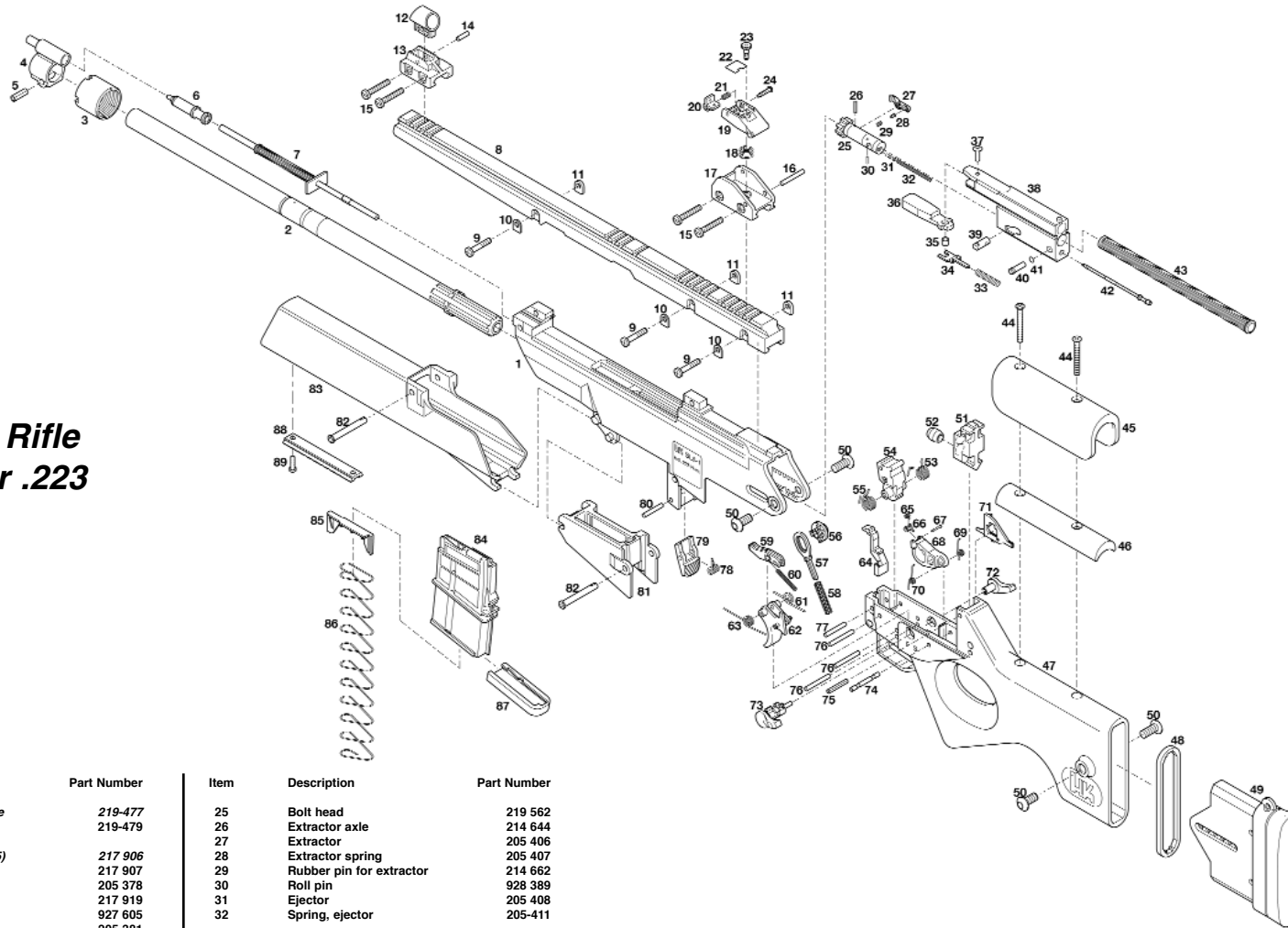


# PARTS LIST & EXPLODED DIAGRAM

## SL8-1 Rifle Caliber .223



Item	Description	Part Number
1	Rifle, SL8-1 complete	219-477
	Housing	219-479
2	Barrel, complete (2-5)	217 906
	Barrel	217 907
3	Barrel retaining nut	205 378
4	Gas block	217 919
5	Roll pin, gas block	927 605
6	Piston, complete	205 381
7	Piston rod, complete	205 384
8	Mounting Rail	217 947
9	Flat Headed Screw (3x)	986-785
10	Washer (3x)	214 112
11	Threaded Washer	214 113
12	Front sight, complete (12-14)	217 933
13	Front sight	217 796
14	Front sight base	217 795
15	Roll pin, front sight	928 747
	Flat headed screw (4x)	988 428
16	Rear sight complete (16-24)	217 925
	Roll pin, rear sight	987 695
17	Rear sight guard	217 992
18	Spring, elevation adjustment	217 504
19	Rear sight housing	217 991
20	Rear sight aperture	217 997
21	Spring, windage adjustment	217 518
22	Flat Spring	217 515
23	Screw, elevation adjustment	217 505
24	Screw, windage adjustment	217 517
	Bolt complete (25-42)	219 560
	Bolt head, complete (25-32)	219 561

Item	Description	Part Number
25	Bolt head	219 562
26	Extractor axle	214 644
27	Extractor	205 406
28	Extractor spring	205 407
29	Rubber pin for extractor	214 662
30	Roll pin	928 389
31	Ejector	205 408
32	Spring, ejector	205-411
33	Bolt head carrier complete (33-38)	217-909
	Spring, cocking handle	205 393
34	Fork	205 394
35	Bushing	205 473
36	Cocking handle	205 395
37	Rivet	205 210
38	Bolt carrier	217 910
39	Cam Pin	205 390
40	Firing pin retainer, complete (40-41)	205 412
41	Firing pin retainer	205 413
42	O-ring, firing pin retainer	983 411
43	Firing pin	205 391
	Recoil spring complete	205 445
44	Buttstock assembly complete (44-76,79)	219 535
	Screw for check rest (2x)	988 372
45	Cheekpiece	217 948
46	Cheekpiece spacer	217 916
47	Buttstock	219 538
48	Spacer, Buttplate	219 537
49	Buttplate complete	219 539
50	Allen Screw, Buttstock (4)	217 903
51	Back plate	219 536

Item	Description	Part Number
52	Buffer	205 452
53	Hammer spring, right	205 428
54	Hammer	217 936
55	Hammer spring, left	205 429
56	Notched disk	217 614
57	Index plate	205 419
58	Compression spring	205 418
59	Sear complete	205 439
59a	Slide	219 411
60	Sear spring	217 917
61	Trigger spring	217 918
62	Trigger	217 934
63	Bolt catch spring	205 466
64	Bolt catch	214 879
65	Locking levercomplete	219 094
	Locking lever spring	214 616
66	Locking lever	219 095
67	Bolt	214 615
68	Locking lever	214 613
69	Elbow spring, right	217 946

Item	Description	Part Number
70	Elbow spring, left	205 201
72	Safety lever, right	205 437
73	Safety lever, left	217 945
74	Recessed axle	205 202
75	Clamping pin	988 371
76	Actuator axle	205 469
77	Actuator axle	205 424
78	Magazine release spring	205 369
79	Magazine release	205 368
80	Axle	205 469
81	Magazine well	219 478
82	Locking pin, complete (2x)	214 125
83	Hand guard complete	219 551
	Magazine complete (10 rounds)	219 472
83	Magazine Housing	219 473
84	Follower	219 474
85	Follower spring	219 475
86	Magazine floor plate	219 476
	HK Combination Tool	988 49