

# > HK416

CAL. 5.56 MM X 45 NATO



# DEMANDING USERS REQUIRE AN UNCOMPROMISING WEAPON: THE HK416.

RELIABLE, ADAPTABLE, RUGGED, EASY-TO-USE AND MAINTAIN.  
THE HK416 SETS A NEW STANDARD FOR AN ADVANCED ASSAULT RIFLE.



**H E C K L E R   &   K O C H   G E R M A N Y**

HECKLER & KOCH-STR. 1 / 78727 OBERNDORF A.N., GERMANY / PHONE: +49 (0)742379-0 / FAX: +49 (0)742379-2350  
SALES@HECKLER-KOCH-DE.COM

**H E C K L E R   &   K O C H   U S A**

19980 HIGHLAND VISTA DRIVE, SUITE #190 / ASHBURN, VA 20147, USA / PHONE: +1 (0)703450-1900 / FAX: +1 (0)703450-8160  
INFO@HECKLER-KOCH-US.COM

**H E C K L E R   &   K O C H   U K**

P. O. BOX 7151 / NOTTINGHAM NG7 2TD, GREAT BRITAIN / PHONE: +44 (0)11592487-20 / FAX: +44 (0)11592487-30  
ENQUIRIES@HECKLER-KOCH-UK.COM

**H E C K L E R   &   K O C H   F R A N C E**

7, RUE DE LA PLAINE / 78860 SAINT-NOM-LA-BRETÈCHE, FRANCE / PHONE: +33 (0)1610623-00 / FAX: +33 (0)1610623-09  
INFO@HECKLER-KOCH-FR.COM

**WWW.HECKLER-KOCH.COM**

# OUR TRADITION MEANS CONSISTENCY.

THE STORY OF HECKLER & KOCH STARTED IN 1949. THE DEVELOPMENT OF THE G3 AND THE INTRODUCTION OF THIS MILESTONE AS THE INFANTRY RIFLE FOR THE GERMAN ARMY IN 1956 WERE THE FIRST STEPS ON THE ROAD TO BECOMING A WEAPONS MANUFACTURER OF EXCELLENCE. EVEN THEN OUR STRATEGY, WHICH HAS NOT CHANGED OVER THE YEARS, WAS: NO COMPROMISE.

To be consistent means to accept no compromise throughout our product range. For us, this means using only premium materials, utilising only the most advanced manufacturing processes, and striving continuously towards innovation. The safety of the user and excellence in after sales support are central to this philosophy.

This is why our small arms products are the first choice for the military and the police forces of many NATO countries and their allies.

The Heckler & Koch “Weapons Range” philosophy optimises logistics and economics that result in minimum long term cost and maintenance of the product for the customer. Our refusal to compromise in manufacturing and design ensures the maximum durability of the weapon and results in financial benefits in the long term.

The care and commitment we put into the manufacture of our products is at the centre of our relationship with our customers, employees and the environment. In this way, we create the basis of our own future as an innovative company.

# EXPERIENCE MEANS RELIABILITY. RELIABILITY COMES FROM EXPERIENCE.

IN DEVELOPING THE HK416, HECKLER & KOCH PURSUED A SINGLE GOAL: TO START OFF WHERE COMPARABLE ASSAULT RIFLES HAVE ALREADY REACHED THEIR LIMITS. THE RESULT: IMPROVED COMBAT EFFICIENCY “MADE IN GERMANY”.

Technical studies have shown that comparable assault rifles from other manufacturers suffer from fundamental defects and considerable shortcomings with regard to reliability, safety, accuracy and ease of handling. Another complication is the need for the user to carry out constant, intensive maintenance to ensure that the rifle is always ready for action. These findings, together with the experience that Heckler & Koch gained during its highly successful “midlife improvement programme” for the British Army SA80 assault rifle, have now borne fruit in the HK416.

The HK416 incorporates an innovative assault rifle concept that is based on modularity, variability and cost effectiveness. Besides a selection of different barrel lengths, the user can also choose from a wide range of specialist accessories. The improved add-on grenade launcher, the GLM, can also be employed as a stand alone weapon independent of the system. Heckler & Koch’s patented Free-Floating Handguard System (MIL-STD-1913) allows the user 360° individuality.

In all of the durability and extreme conditions tests it has undergone, the HK416 has demonstrated that the systems impeccable combat efficiency is an all round success. Thanks to the integrated G36 technology, the HK416 weapon system from Heckler & Koch represents yet another reliable option for military, police and special operations forces with regard to accuracy, reliability, ease of maintenance and handling.

Users already familiar with assault rifles of a similar design will only require the very minimum of conversion training. All key operating features and safety mechanisms are designed to vastly reduce training times when converting to the HK weapon system. The only major difference for the end user to appreciate is increased reliability and effectiveness. With one exception: Stripping and reassembling can be carried out entirely without the use of special tools. This is due to innovative design of components allowing them to interface one another to enable the stripping and reassembling process. The HK416’s modular design allows 100% interchangeability of components within the weapon system. Even between calibres, as many components as is physically possible are interchangeable with its big brother, the HK417.

The customers cost benefits for a vastly reduced logistics holding are clear to see. Also with the “Minimum Upgrade Package” offered by Heckler & Koch it is possible to continue using components from existing models of rifles, and to combine them with HK416 technology. This means HK416 technology is still available to those with limited budgets, without having to make any compromise when it comes to quality and reliability.

With the HK416, Heckler & Koch starts off looking for solutions where others have long since given up.

# SIMPLE AND VERSATILE: ONE PLATFORM, FOUR BARRELS ONE METHOD OF HANDLING.

EVERY MISSION IS DIFFERENT. TO GIVE THE USER THE MAXIMUM OPTIONS WHATEVER THE TYPE OF OPERATION, WE OFFER THE HK416 AS A FLEXIBLE AND EASY TO HANDLE OVERALL CONCEPT IN FOUR BARREL LENGTHS – 10“, 14.5“, 16.5“ AND 20“. WHETHER IN CLOSE QUARTERS COMBAT, AT SHORT RANGES, OR IN ITS FUNCTION AS A DESIGNATED MARKSMAN RIFLE (DMR): WITH THE HK416 THE USER RETAINS UNLIMITED OPTIONS.



HK416 – 10“



HK416 – 14.5“



HK416 – 16.5“



HK416 – 20“

# INDIVIDUALITY COMES FROM INNOVATION.

THE HK416 IS A WEAPON SYSTEM THAT GUARANTEES THE USER THE PERFECT COMBINATION OF INDIVIDUAL OPTIONS AND ABSOLUTE RELIABILITY AND FUNCTIONAL TECHNOLOGY. THE CENTRAL ELEMENT OF THIS MODULAR PRINCIPLE IS THE UPPER RECEIVER ASSEMBLY WITH ITS HK-PATENTED FREE-FLOATING PICATINNY HANDGUARD SYSTEM (MIL-STD-1913). THIS CAN BE USED TO ATTACH ADD-ON GRENADE LAUNCHER, OPTICAL SIGHTS, TACTICAL LIGHTS, AND MUCH MORE, THUS ALLOWING THE USER TO MAKE THE WEAPON MISSION SPECIFIC IN SECONDS.



## 360° INDIVIDUALITY

*The HK-patented Free-Floating Handguard System is a unique handguard that allows the user to mount accessories exactly where they are needed. Special features include: Sights mounted on the rails retain their point of zero even if the handguard is removed and reinstalled. Practicality: The handguard lock screws can be released/tightened using the carrying sling hook or the bolt head.*



## BUTTSTOCK

*The extendable buttstock can be locked in various positions, thus allowing adjustment to the individual, of length of pull and eye relief as desired. The protected release lever prevents an intentional release or snagging, as well as protecting against injuries and fouling. The buttstock contains the rear sling loops for the carrying sling. Inside the buttstock are compartments for storage of spare batteries and tools. A choice of convex or concave shaped recoil pads is also available.*



## MULTIFUNCTION GAS BLOCK

*The gas block simultaneously combines multiple functions: It houses the folding front sight, the front sling loops, mounting points for a bayonet and the GLM add-on grenade launcher.*



# FOUR COMPONENTS, ONE EFFECT: THE PERFECT ASSAULT RIFLE.

WITH THE “MINIMUM UPGRADE PACKAGE” OFFERED BY HECKLER & KOCH, ASSAULT RIFLES OF SIMILAR TYPES CAN BE UPGRADED TO A HK416 VERY ECONOMICALLY AND EFFICIENTLY.

THIS IS DONE BY UTILISING THE CUSTOMERS EXISTING LOWER RECEIVER: THE REST IS REPLACED WITH HECKLER & KOCH TECHNOLOGY. THE PACKAGE ALSO INCLUDES AN IMPROVED STEEL MAGAZINE. ALREADY THIS IS CONSIDERED THE MOST RELIABLE AVAILABLE BY SPECIALISTS WORLDWIDE.





# DEMANDING OPERATIONS DEMAND ABSOLUTE RELIABILITY AND PERFORMANCE.

WHEN LIVES ARE AT STAKE, A RIFLE HAS TO BE ABSOLUTELY RELIABLE. MALFUNCTIONS ARE NOT AN OPTION, A FACT SHOWN TIME AND TIME AGAIN DURING OPERATIONS IN CRISIS AREAS. THAT'S WHY THE PERFECT ASSAULT RIFLE NOT ONLY HAS TO WORK IN ALL CLIMATIC CONDITIONS AND WITH THE ASSOCIATED DEGREE OF FOULING: IT ALSO HAS TO BE EASY TO OPERATE. THE HK416 DOES ALL OF THIS, MAKING IT THE SAFE OPTION FOR DIFFICULT MISSIONS.



## ALWAYS THE RIGHT COMBINATION

*The HK416 standard trigger can be optionally replaced with a two-stage match trigger. A let-off point before the trigger actually releases allows the user to remain calmer and more confident. Similarly to the selection of different grips, the safety lever can be located as desired (right hand side only, left hand side only, ambidextrous). The HK416 offers the ideal combination for every user.*



## OVER THE BEACH TEST: PASSED

*The HK416 is designed so that it is ready to fire even immediately after being submerged under water. In extreme situations it can also be shot from the water without endangering the user. An indispensable advantage for combat operations carried out along coastlines, lakes and rivers.*



## DIRTY ENVIRONMENTS, CLEAN OPERATION

*In the HK416, the receiver, magazine and action are designed and built in such a way that the weapon will not malfunction even when subject to heavy fouling e.g. with sand or mud. In its gas system, the piston and driving rods permit minimum fouling deposits. Dirt particles and gases are no longer blown into the upper receiver, thus preventing malfunctions. The beveled magazine well makes changing magazines much faster and easier than with other rifles — especially in the dark.*



## EVEN GREATER SUPERIORITY

*The add-on GLM (Grenade Launcher Module) can be used to achieve a tremendous increase in the user's firepower. The GLM is designed to accept a wide range of different munitions for a broad spectrum of applications, including less-lethal options.*

# EXPONENTIAL SUPERIORITY.

COMBINED WITH AN ADD-ON GRENADE LAUNCHER THE HK416 IS TRANSFORMED INTO A SYSTEM WITH SUPERIOR FIREPOWER. LIKE THE HK416, THE GLM HAS BEEN DEVELOPED USING THE MODULAR PRINCIPLE. THESE CONFIGURATION OPTIONS OFFER THE USER A NUMBER OF VARIANTS: WHETHER AS THE GRENADE LAUNCHER ALONE (STAND ALONE MODULE SAM) OR FITTED TO THE HK416. THE INDIVIDUAL ADVANTAGES OF THE DIFFERENT VARIANTS CAN BE PUT TO USE OPTIMALLY TO SUIT THE PLANNED MISSION. FOR EVEN GREATER VERSATILITY THE GLM IS ALSO 100% COMPATIBLE WITH THE HK417.



## GLM – A POWERFUL COMBINATION

*The GLM is an add-on, or stand alone launcher for 40 mm x 46 grenades of any length. It can be attached to the free floating handguard of the HK416 without any tools. Loading is achieved by the barrel rotating out to the left. In contrast to other solutions on the market, a barrel that swivels only to one side leaves only minimal axial tolerances between the cartridge and the chamber. Using a separately available adapter, the GLM can be adapted to fit a wide variety of assault rifles, for example M4/M16.*



## SAM GLM – A SOLUTION INDEPENDENT OF THE SYSTEM

*The modular design of the GLM makes it possible to transform the basic model into an independent stand alone grenade launcher, the SAM GLM. This is done by combining the basic model with the minimum of optionally available HK accessories.*

# SUPERIOR ACCESSORIES FOR THE SUPERIOR WEAPON SYSTEM.

ANY NUMBER OF ACCESSORIES ARE AVAILABLE TO ENHANCE THE HK416 WEAPON SYSTEM. ONE ADVANTAGE IN TERMS OF LOGISTICS, COST-EFFECTIVENESS AND MINIMUM RETRAINING, IS THE FACT THAT THE HK416'S MIL-STD-1913 RAIL SYSTEM ENABLES THE USER TO FIT AND USE MANY EXISTING, FAMILIAR TACTICAL ACCESSORIES, AS WELL AS HECKLER & KOCH DEVELOPED PRODUCTS.



**IRON SIGHTS**

*For maximum accuracy and a consistent point of impact.*



**HARRIS BIPOD WITH PATENTED HK ADAPTER**

*For a secure rest: The bipod allows good aiming even on uneven ground. Quick installation is possible using the Heckler & Koch patented bipod adapter.*



**HK HIGH-PERFORMANCE MAGAZINE**

*Rugged and extremely reliable: the laser-welded, all-steel construction, high-performance magazine. Length: 195 mm, width: 87 mm, depth: 22 mm, empty weight: 250 g, capacity: 30 rounds.*



**GRIP VARIANTS**

*Keeping a grip on any situation.*



**SAFETY BLANK FIRING ATTACHMENT**

*For danger-free training in a wide range of different mission scenarios.*



**CONVEX OR CONCAVE RECOIL PAD**

*To hold the weapon to the shoulder securely.*

## TECHNICAL DATA

	HK416 – 10“	HK416 – 14.5“	HK416 – 16.5“	HK416 – 20“
Calibre	5.56 mm x 45 NATO			
Operating principle	Gas-operated			
Bolt system	Rotating bolt			
Feed mechanism	Magazine, 20/30 rounds			
Cartridge case ejection	Right			
Modes of fire	Single fire/Sustained fire			
DIMENSIONS				
A Length, max.	797 mm	900 mm	951 mm	1037 mm
A Length, min.	701 mm	804 mm	855 mm	941 mm
B Width	78 mm	78 mm	78 mm	78 mm
C Height <sup>1</sup>	240 mm	240 mm	240 mm	240 mm
D Barrel length <sup>2</sup>	264 mm	368 mm	419 mm	505 mm
E Sight radius	371 mm	371 mm	371 mm	528 mm
WEIGHT				
Weapon without magazine <sup>1</sup>	approx. 3020 g	approx. 3490 g	approx. 3560 g	approx. 3855 g
Magazine, 30 rounds (empty)	approx. 250 g	approx. 250 g	approx. 250 g	approx. 250 g
Magazine, 30 rounds (fully charged) <sup>3</sup>	approx. 620 g	approx. 620 g	approx. 620 g	approx. 620 g

## OTHER DATA

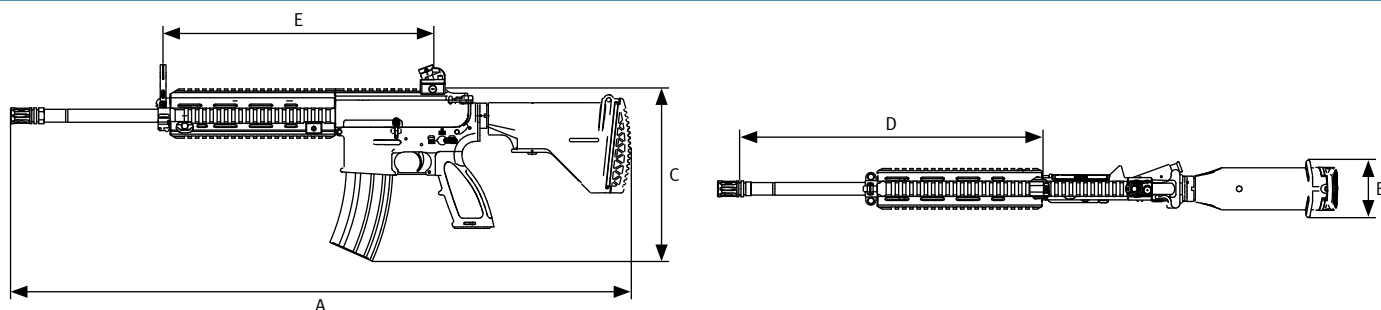
Trigger pull	34 N	34 N	34 N	34 N
Rate of fire	approx. 850 rounds/min	approx. 850 rounds/min	approx. 850 rounds/min	approx. 850 rounds/min
Muzzle velocity -v0- <sup>3</sup>	approx. 788 m/s	approx. 882 m/s	approx. 890 m/s	approx. 917 m/s
Muzzle energy -E0- <sup>3</sup>	approx. 1240 J	approx. 1555 J	approx. 1580 J	approx. 1680 J
Barrel profile/twist	Groove/land profile, 6 grooves, right-hand twist 178 mm			
Sight <sup>4</sup>	Mechanical dioptré sight			

### NOTES

Rails for accessories: MIL-STD-1913 (Picatinny) on handguard at 3, 6, 9, 12 o'clock and on top of receiver. Adjustable buttstock: 96 mm adjustment travel, 6 positions. Optional: trigger with 25 N trigger pull, concave/convex buttstock plate.

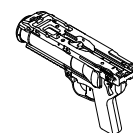
<sup>1</sup> Without sight, front sight folded down / <sup>2</sup> Without flash hider / <sup>3</sup> Ammunition M855 / <sup>4</sup> Different sights can be mounted

Subject to modification

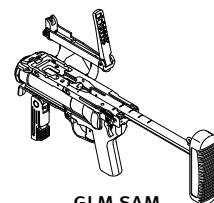


## TECHNICAL DATA

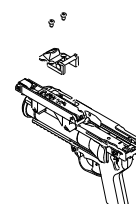
	GLM HK416/417	GLM SAM
Calibre	40 mm	
Operating principle	Single loader	
Bolt system	Breech-loading, break-action barrel	
Feed mechanism	Manual	
Cartridge case ejection	Manual	
Modes of fire	Single fire	
DIMENSIONS		
A Length, max.	285 mm	518 mm
B Length, min.	–	434 mm
C Width	75 mm	99 mm
D Height, max.	161 mm	331 mm
E Height, min.	–	210 mm
F Barrel length	229 mm	229 mm
G Sight radius	148 mm	148 mm
WEIGHT		
Weapon <sup>1</sup>	approx. 1270 g	
Ladder sight	approx. 130 g	
Buttstock	approx. 800 g	
Forward grip with rail	approx. 100 g	
Adapter HK416, HK417/M4/M16	approx. 80 g/approx.175 g/approx. 235 g	



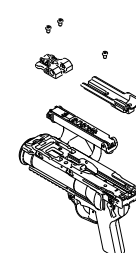
GLM BASIC WEAPON



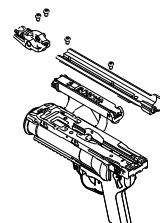
GLM SAM



GLM HK416/417



GLM M4



GLM M16

## OTHER DATA

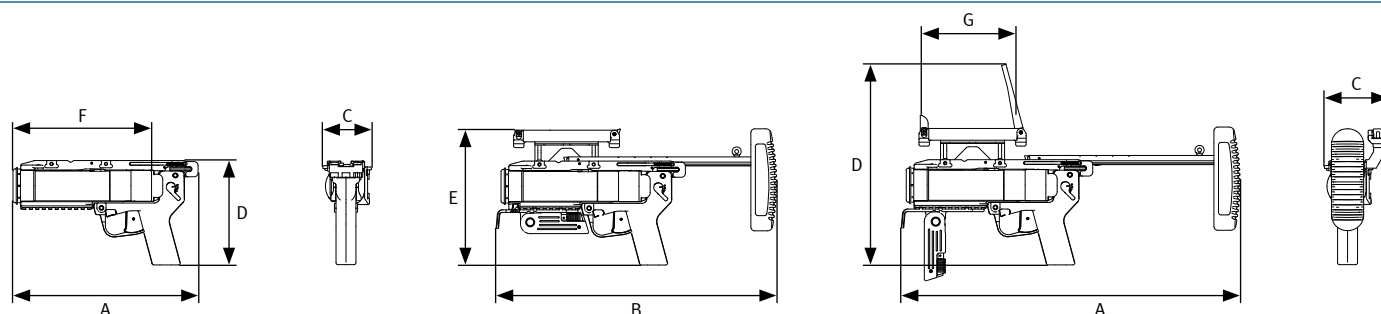
Trigger pull	60 ± 10 N	60 ± 10 N
Muzzle velocity -v5 <sup>-3</sup>	approx. 75 m/s	approx. 75 m/s
Barrel profile/twist	Groove/land profile, 6 grooves, right-hand twist 1200 mm	
Sight <sup>4</sup>	Mechanical ladder sight, sight steps increasing by 50 m	

### NOTES

Fires 40 mm x 46 ammunition of any length. Adjustable buttstock: 81 mm adjustment travel, 4 positions. Optional: MIL-STD-1913 (Picatinny) on the side for accessories. Ladder sight with Tritium inlays available.

<sup>1</sup> Basic weapon

Subject to modification









**BUTTSTOCK**  
*Lockable in different positions, with integrated storage compartments*

**CARDTRIDGE CASE DEFLECTOR**

**EJECTION PORT**  
*With dustcover*

**FOLDABLE FRONT SIGHT**

**BUTTSTOCK  
RELEASE LEVER**

**FORWARD  
ASSIST**

**LOCKING SCREW**  
*To attach the handguard*

**MAGAZINE  
CATCH**

**INTERCHANGEABLE ERGONOMIC PISTOL GRIP**  
*With or without integral compartments*

**STANDARD TRIGGER OR  
TWO-STAGE MATCH TRIGGER**

**HK HIGH-PERFORMANCE MAGAZINE**

**BAYONET INTERFACE**

**MULTIFUNCTION GAS BLOCK**